



Local Nature Recovery Strategy

The Technical Process



4 key components

Step 1: Map areas that are of particular importance for biodiversity including national conservation sites, local nature reserves, local wildlife sites and irreplaceable habitats

Step 2: Map areas where action for nature recovery has been taken when LNRSs are reviewed and republished

Step 5: Map areas that could become of particular importance

Department for Environment Food & Rural Affairs

Local nature recovery strategy statutory guidance

What a local nature recovery strategy should contain

Presented to Parliament pursuant to Section 106(5) of the Environment Act 2021
March 2023

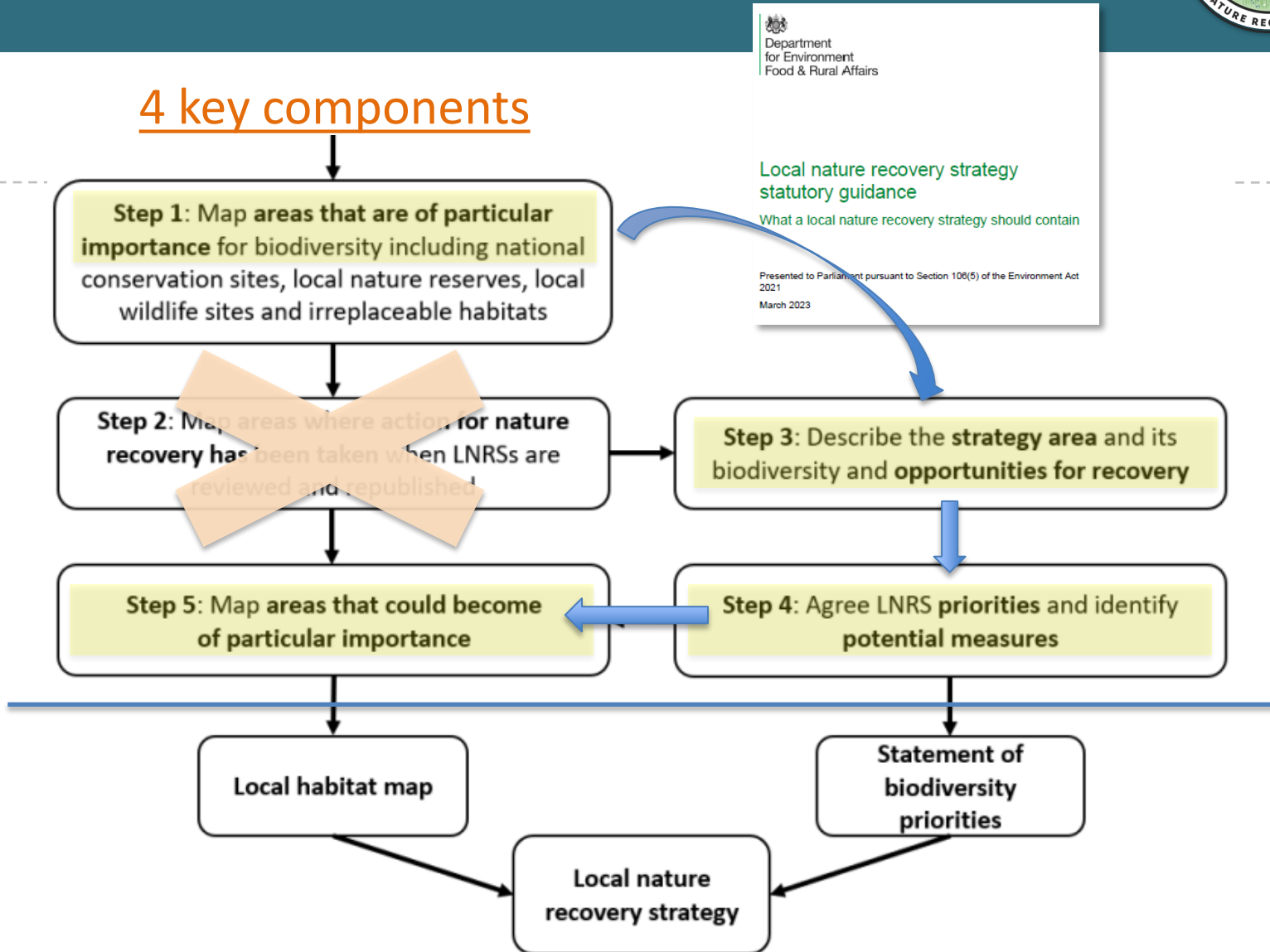
Step 3: Describe the strategy area and its biodiversity and opportunities for recovery

Step 4: Agree LNRS priorities and identify potential measures

Local habitat map

Statement of biodiversity priorities

Local nature recovery strategy



Where have we got to so far with the LNRS?

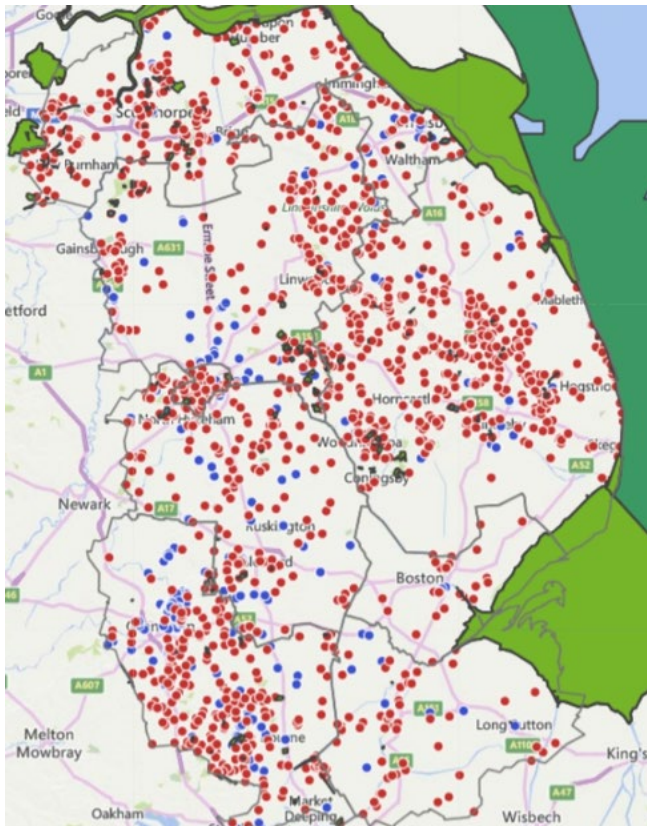
- Areas of Particular Importance for Biodiversity (**APIB map**)
- **Public Survey** – *over 1600 responses*
- **Farm & Manager Survey** – *over 140 responses*
- **Existing plans and strategies** analysed
- **Description** of the Strategy Area – Pressures and Opportunities
- Longlisting – **Identifying priorities** (and potential measures)
- Mapping of **partner projects**



Areas of Particular Importance for Biodivers (APIB map)



The network around which we must recover nature....



Protected sites, Local Wildlife Sites, Irreplaceable Habitats, Veteran Trees. (*NPPF*)

This might look extensive BUT...

the 1270 red dots are Local Wildlife Sites

And the blue dots are trees!

Of those LWS given a condition assessment since 2012, 44% are good, 40% are adequate/moderate, and 16% are poor.

From the Farmers and Managers survey



Favoured habitats, species and services

- Grassland
- Arable
- Hedgerows
- Coastal
- Woodland
- Water
- Wetland
- Heathland
- Garden
- Flowers
- Trees
- 'Bugs'
- Farm birds
- Voles
- Bats
- Fish
- Fungi
- Pollination,
- Soil,
- Income,
- Pest control,
- Water quality and quantity

(colour given only to indicate rankings)

Some emerging priority areas for action



Improve and/or increase:-

Broadleaf woodlands
Grasslands (acid, calcareous, neutral)
Ponds, wetlands and blow-wells
Floodplain and coastal grazing marsh
Hedgerow, scrub, verge and ditch
Fen and peat habitats
Habitats at existing and new
development
Chalk streams and others

Example possible activities:-

Tree-planting, deer control
Grassland creation, 'wilder' grazing
Pond creation or enhancement
Re-wetting land and making it 'lumpy'
Planting or natural regeneration
Re-wetting
Greenspace creation

Restoring natural channels and
features

Some possible priority species for action



Improve and/or increase:-

Wetland & farmland birds

Great Crested Newt

Water vole

Various butterflies and moths

Bats

Arable plants

Plants and inverts of still waters

Fungi

Other saproxylic species

Urban species

Example possible activities:-

Wet, lumpy grassland

More ponds

More vegetated ditches

More scrub

More trees and deadwood

Gently tilled soils

Reduction of nutrient inputs

'Relaxed' grassland management

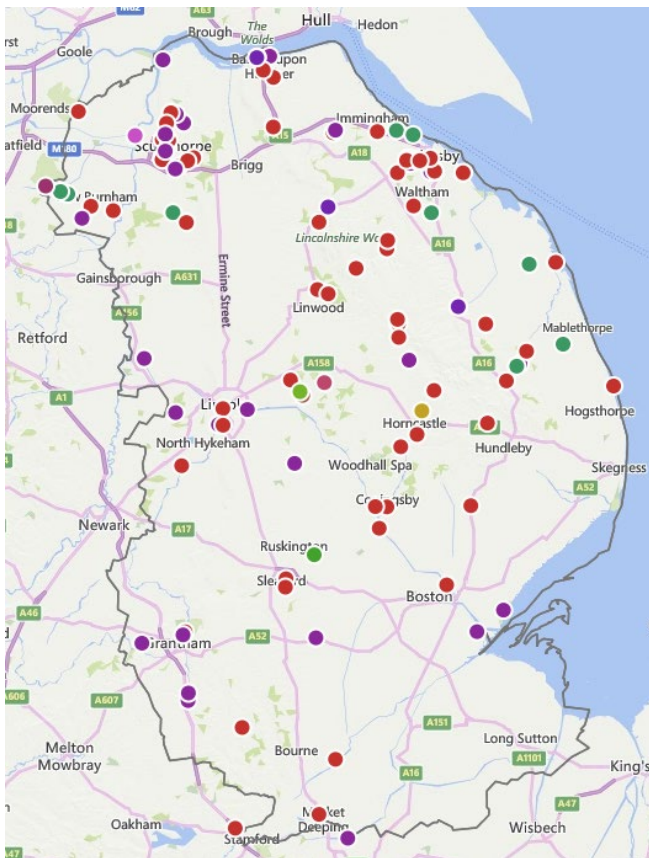
Rotting timber

Homes and greenspace

Nature Recovery Projects

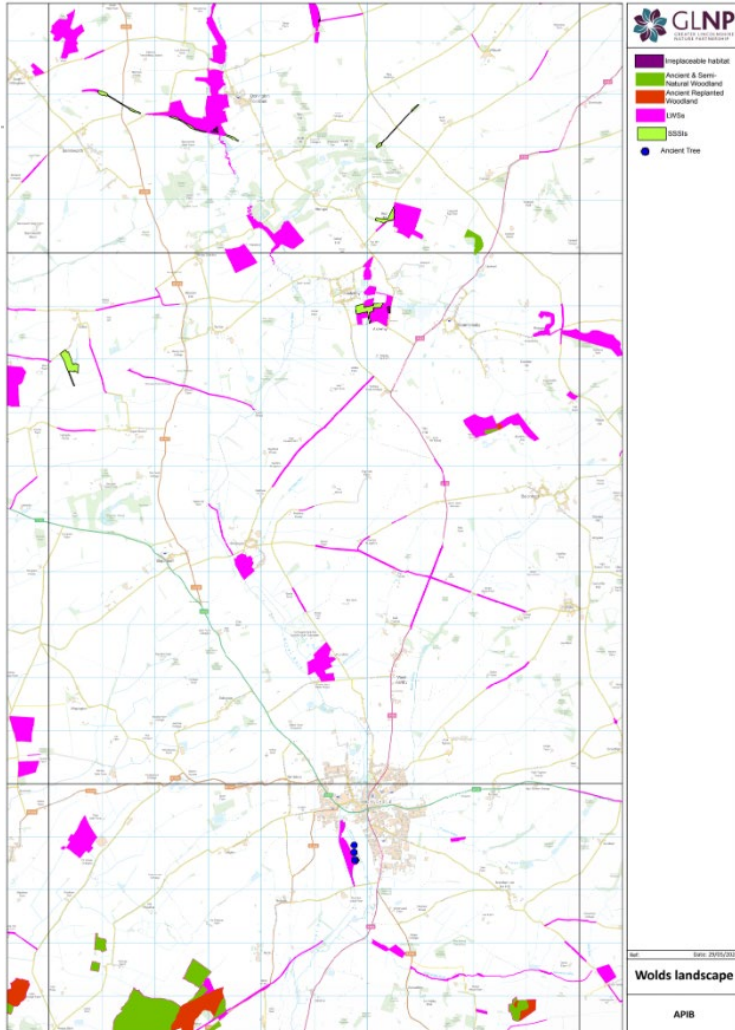


Over 180 projects presented by partners

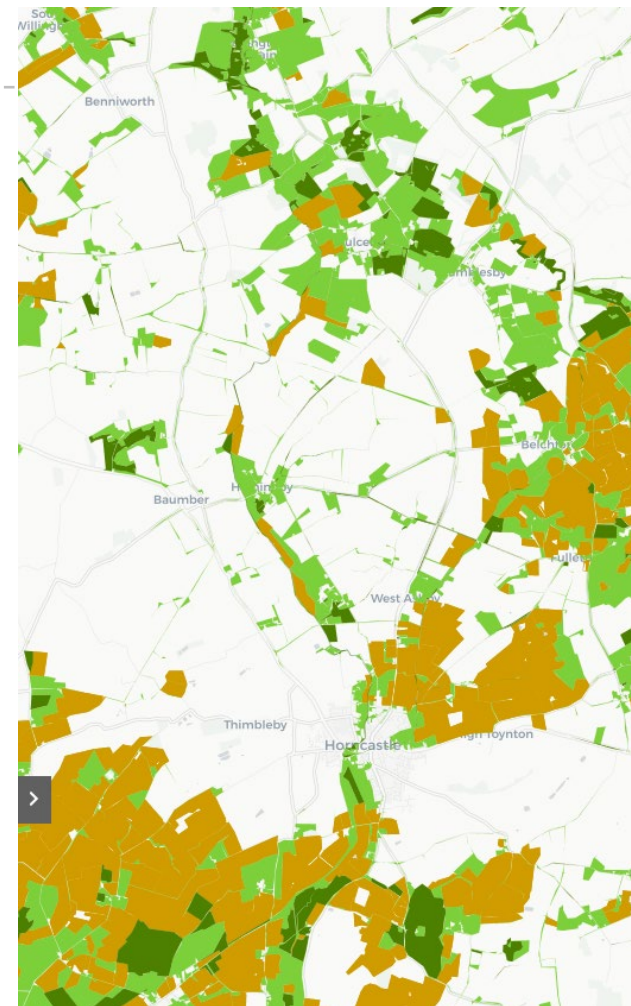


- Central Lincolnshire Local Plan Team
- City of Lincoln Council
- Environment Agency
- Forestry Commission
- Isle of Axholme & North Nottinghamshire Water Level Management Board
- Lincolnshire Chalk Streams Project
- Lincolnshire County Council
- Lindsey Marsh Drainage Board
- Lincolnshire Wildlife Trust
- Natural England
- North East Lincolnshire Council
- North Kesteven District Council
- North Lincolnshire Council
- RSPB
- The Crown Estate
- Private

APIBS and Opportunities



Contains public sector information licensed under the Open Government Licence v3.0. © Crown Copyright and Database Rights (2024) Ordnance Survey



Timescales and next steps



Summer 24
Development

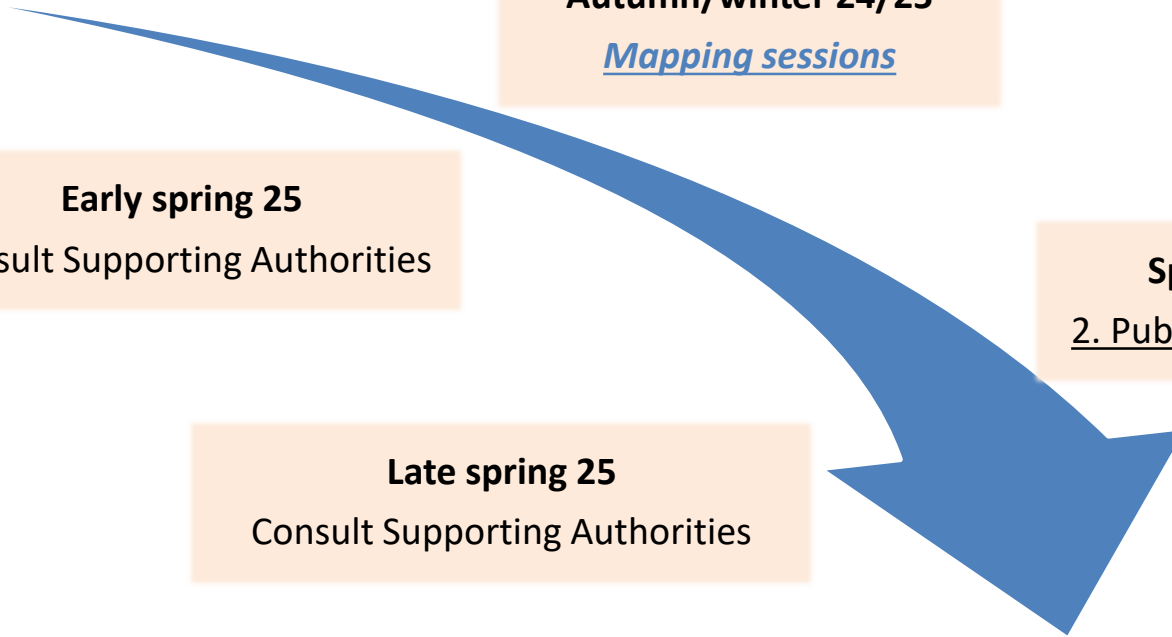
Autumn/winter 24/25
Mapping sessions

Early spring 25
Consult Supporting Authorities

Spring 2025
2. Public consultation

Late spring 25
Consult Supporting Authorities

Summer/autumn 25
Publication
(& then a monitoring role?)



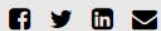
Current example



Local Nature Recovery Strategy

[Home](#) / [Oxfordshire's draft Local Nature Recovery Strategy \(LNRS\) consultation - phase 3](#)

Oxfordshire's draft Local Nature Recovery Strategy (LNRS) consultation - phase 3



Welcome to the consultation page for the draft Local Nature Recovery Strategy (LNRS). Earlier in February and March 2024 we asked people and organisations in Oxfordshire about their priorities for nature's recovery (see [phase 1](#)). In May 2024 we also collected information about specific locations where people and organisations are planning actions to recover biodiversity in Oxfordshire (see [phase 2](#)). Now we have used this information to create draft versions of the LNRS documents and a map which you can find within this consultation page.

Key Dates

 [Phase 3 survey opens](#)
18 October 2024

 [Phase 3 survey closes \(at 11:59 pm\)](#)
01 December 2024

What does the recovery of nature mean to you?



Greater Lincolnshire Local Nature Recovery Strategy

Any questions?





Webpage - www.GlincsLNRS.org.uk
Email - Info@glincslnrs.org.uk