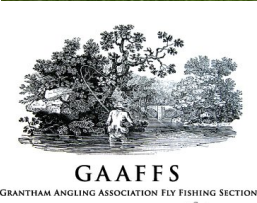




# Upper Witham Restoration



UNIVERSITY OF LINCOLN



National Trust



Environment Agency

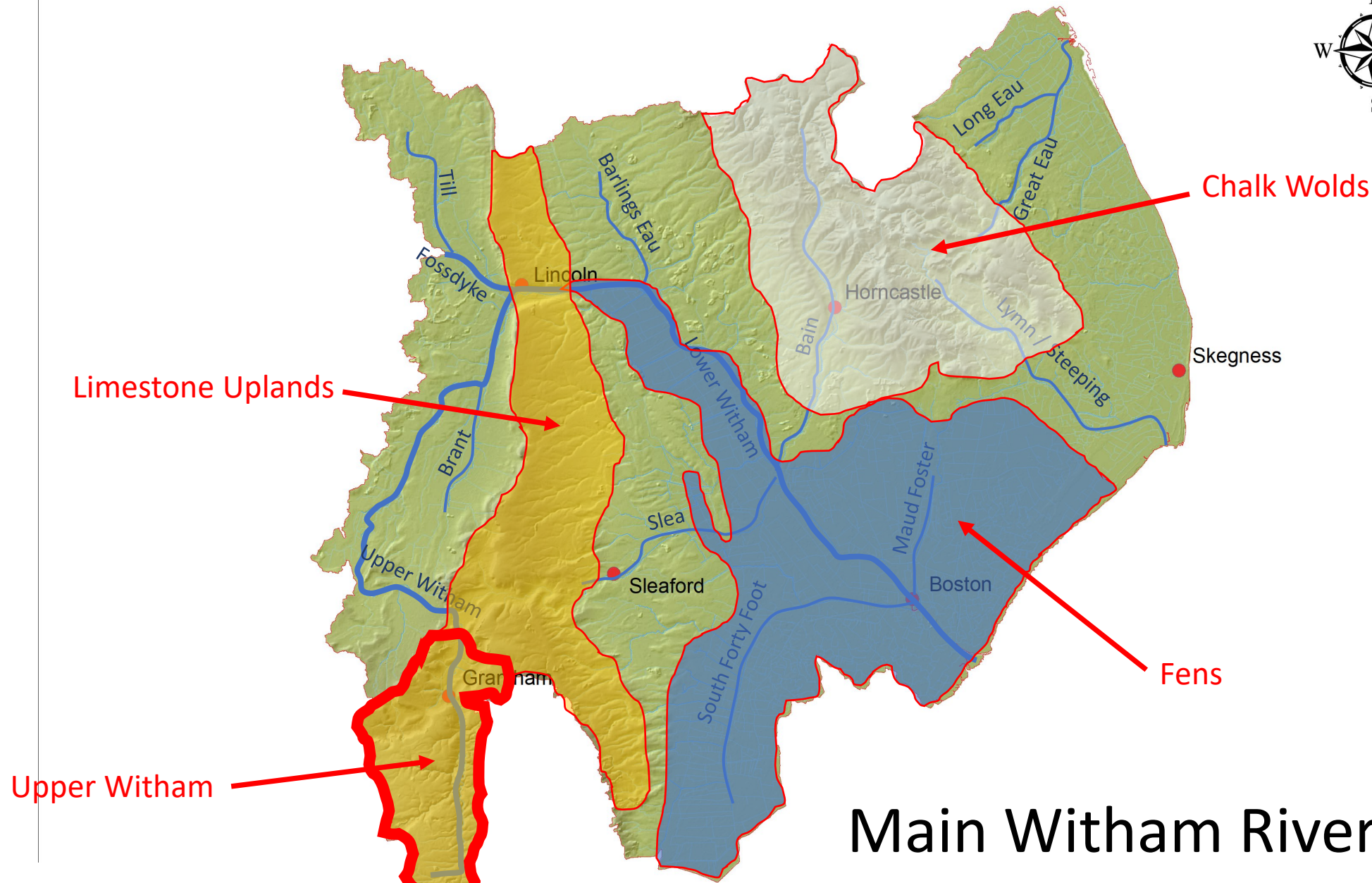
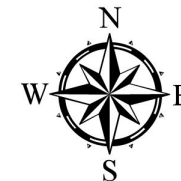


BLUE GREEN CORRIDOR  
Protecting and preserving our environment



WILD TROUT TRUST

David Hutchinson – Environment Agency



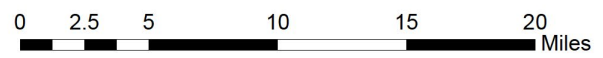
Limestone Uplands

Chalk Wolds

Fens

Upper Witham

# Main Witham Rivers



# Typical Upper Witham Catchments



Dry Floodplain

River channel pushed to side of valley

Deep uniform channel

Little gravel or wood



Trees in the floodplain

Well-connected floodplain

Gravel Riffles for trout spawning

Deep pools and tree roots

Back Water



# Early Restoration attempts.



Disconnected floodplain

No change to bed

No gravel



A project part funded by the European Regional Development Fund in partnership with South Kesteven District Council, North Kesteven District Council, National Trust, Environment Agency



**European Union**  
European Regional  
Development Fund

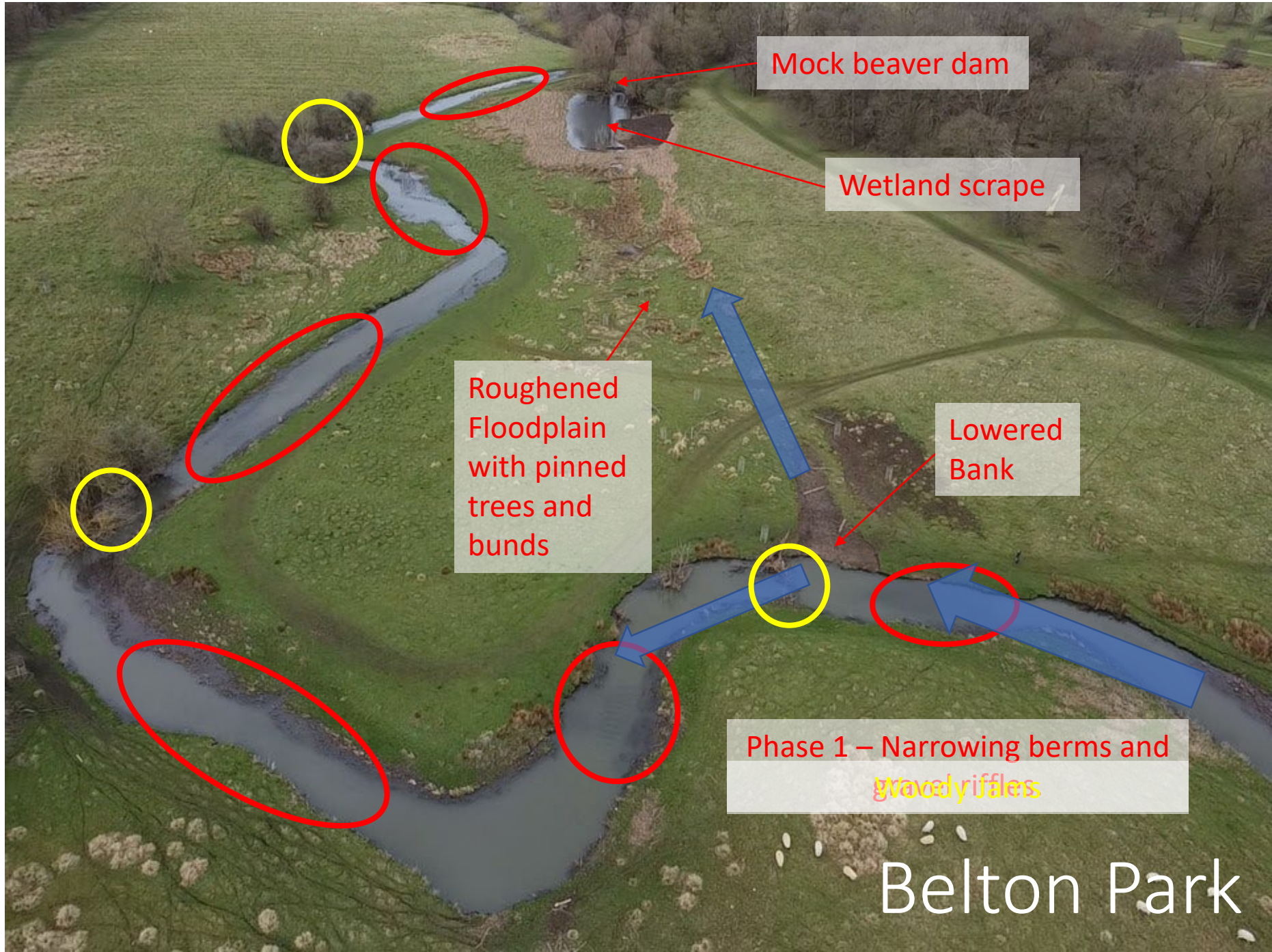


**SOUTH  
KESTEVEN  
DISTRICT  
COUNCIL**



**Environment  
Agency**

# Belton Park





Belton Park





# Manthorpe – Flood bank Removal

STRAIGHT DEEP, RIVER CHANNEL

FLOOD BANK

LOW WET FIELDS DISCONNECTED  
FROM RIVER

# Manthorpe



# Manthorpe - Channel



# Manthorpe - Floodplain



# Upper Cringle Brook





Upper Cringle Brook





Upper Cringle Brook



Colsterworth





Groundwater Fed Wetland

River widened

Gravel Bars and riffles

Wildflower area

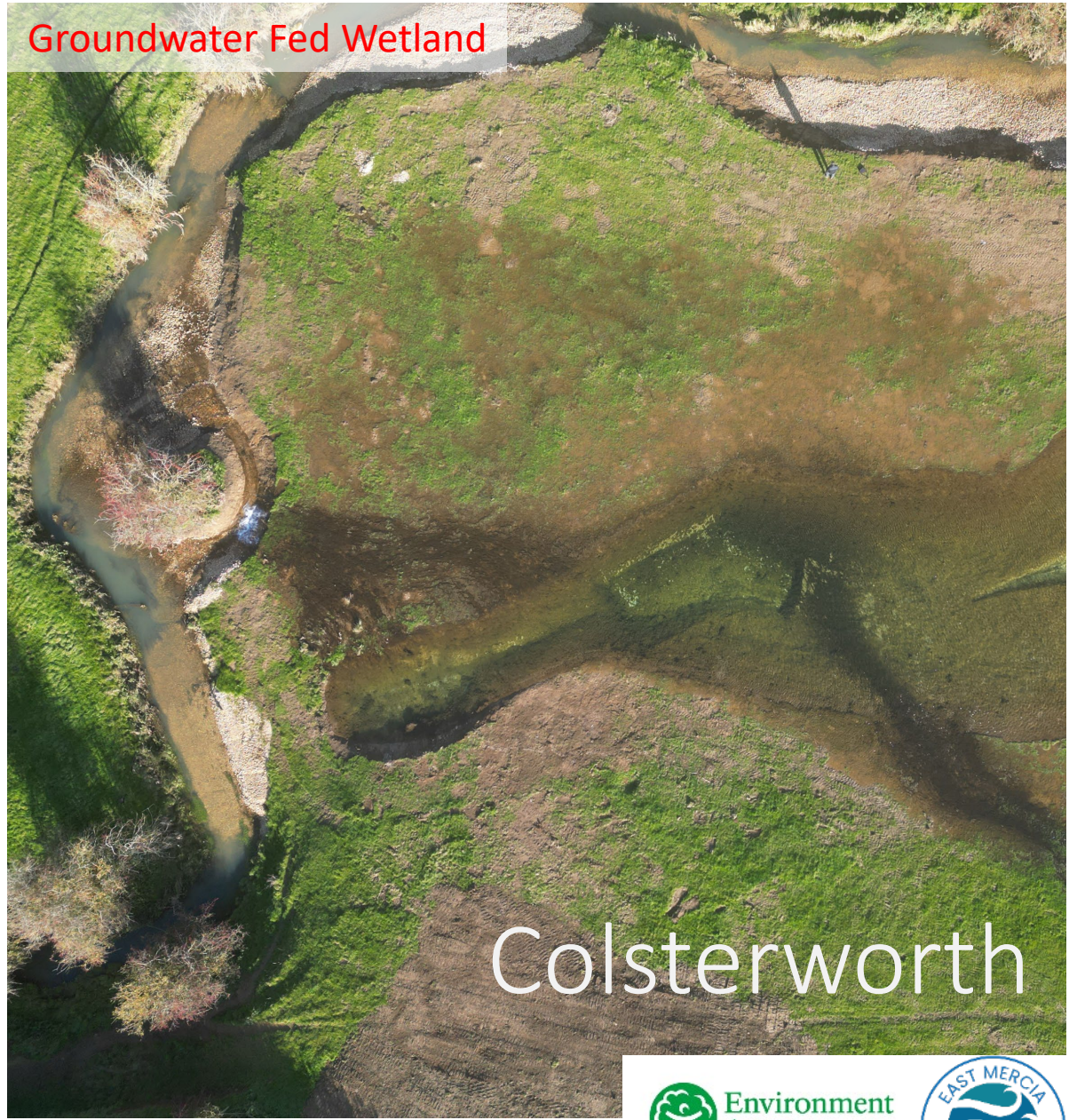
Floodplain ponds

Colsterworth





Natural Limestone Gravel



Groundwater Fed Wetland



In-set Floodplain

Colsterworth



# Grange Farm - Stage Zero

River Witham Pre Project

Dry Floodplain



# Grange Farm - Stage Zero

Old Witham Channel being filled

Roughened Floodplain



# Grange Farm - Stage Zero



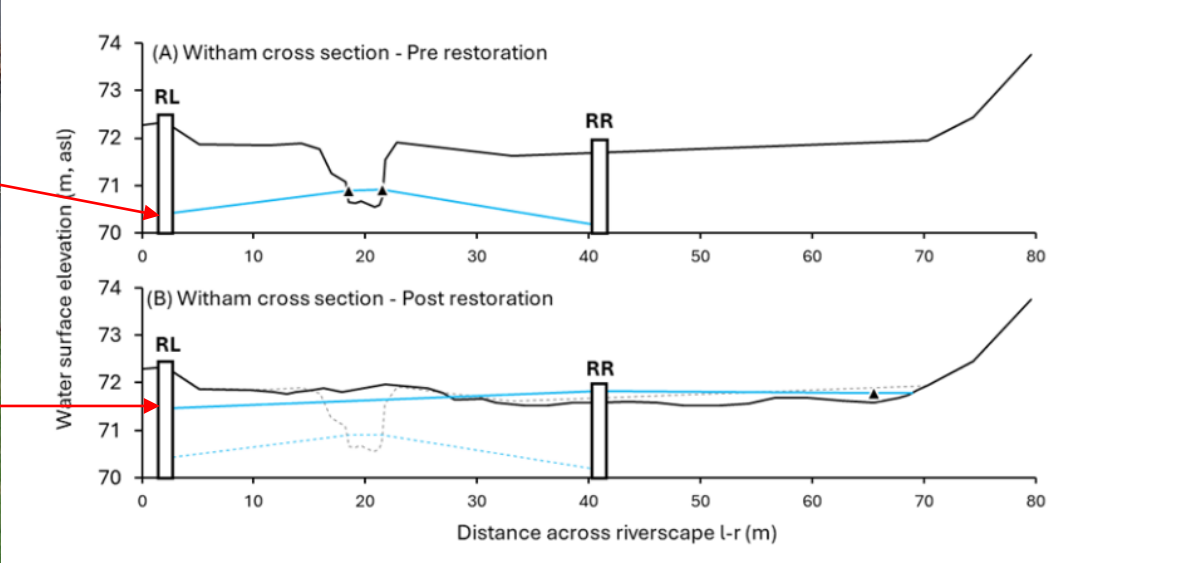
# Grange Farm - Stage Zero

River Witham Pre Project

Downstream end of project

Pre-restoration Ground Water Levels

Post-restoration Ground Water Levels





Grange Farm - Stage Zero

Added and secured wood



Added smaller gravel



Current approach





# Grantham Urban Projects

## Find Out More

<https://youtu.be/biWRCJ0zYW0>

[https://restorerivers.eu/wiki/index.php?title=Case\\_study%3AUpper\\_Witham\\_Restoration](https://restorerivers.eu/wiki/index.php?title=Case_study%3AUpper_Witham_Restoration)

[david.Hutchinson@environment-agency.gov.uk](mailto:david.Hutchinson@environment-agency.gov.uk)

